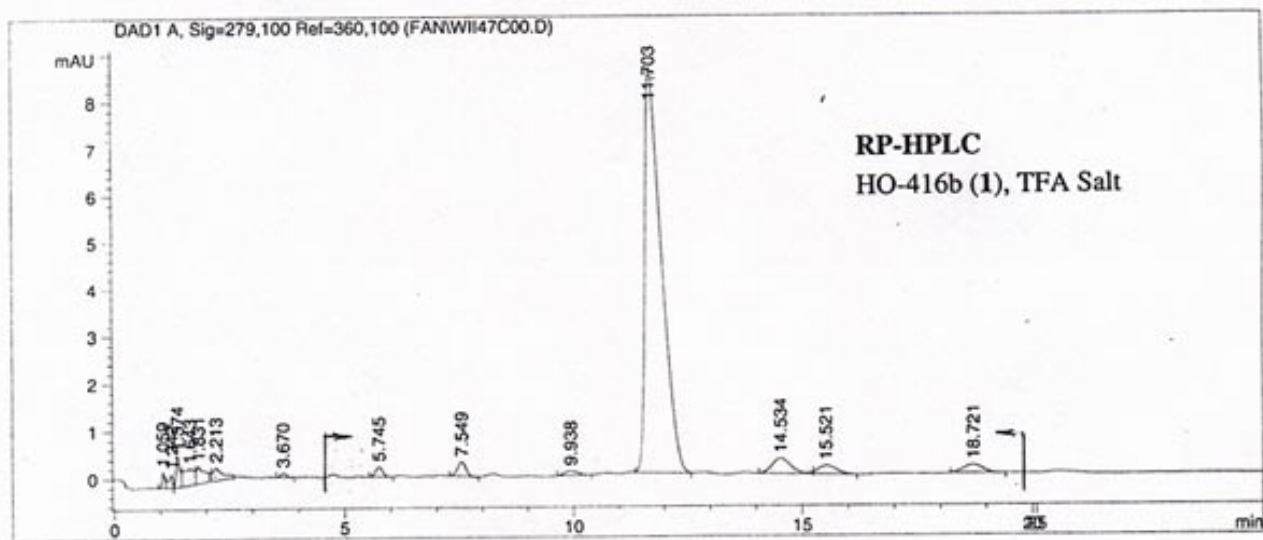


(5) ESMS, NMR, and HPLC for HO-416b (1), continued.



Purity = $214.56078 / 241.46072 \times 100\% = 89\%$

Signal 1: DAD1 A, Sig=279,100 Ref=360,100

Peak #	RetTime [min]	Type	Width [min]	Area [mAU*s]	Height [mAU]	Area %
1	1.059	PV	0.0627	1.42823	3.41830e-1	0.5413
2	1.242	VP	0.0895	1.79066	2.84265e-1	0.6786
3	1.374	VV	0.0802	3.75576	6.61398e-1	1.4233
4	1.643	VV	0.2125	5.86137	3.44469e-1	2.2213
5	1.831	VB	0.1630	4.68653	3.67038e-1	1.7761
6	2.213	BB	0.1968	4.15304	2.70946e-1	1.5739
7	3.670	PP	0.1187	7.34811e-1	8.68439e-2	0.2785
8	5.745	BP	0.1524	2.13680	2.07074e-1	0.8098
9	7.549	PP	0.1890	3.77129	3.03430e-1	1.4292
10	9.938	BP	0.2397	1.88940	9.43205e-2	0.7160
11	11.703	BP	0.3603	214.56078	8.62219	81.3127
12	14.534	PB	0.3414	9.13115	3.19572e-1	3.4605
13	15.521	BP	0.3279	4.91266	1.80300e-1	1.8618
14	18.721	BB	0.3514	5.05864	1.71873e-1	1.9171

Area = 241.46072

Totals : 263.87112 12.25554